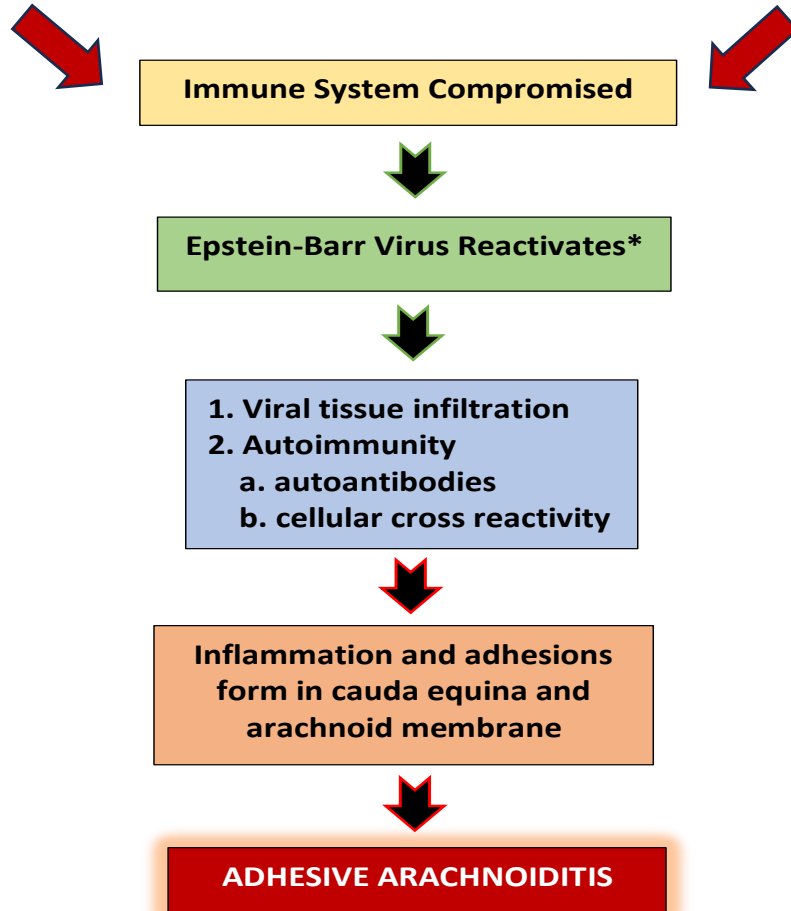


## THE PATHOLOGIC PATHWAY TO ADHESIVE ARACHNOIDITIS (AA)

	<u>INCITING EVENT<sup>+</sup></u>		<u>PREDISPOSING DISEASE</u>
A	Trauma	A	Genetic connective tissue disease
B	Infection	B	Autoimmune disease
C	Spinal fluid contamination	C	Spinal anatomic abnormality



+Trauma, infection, or spinal fluid contamination that severely affects the lumbar-sacral spine may initially bypass viral reactivation and autoimmunity and cause AA. Viral reactivation will, however, usually occur later and accelerate the development of AA.

\*Other viruses and some bacteria may also reactivate and/or accompany and accentuate EBV reactivation.

You can join our weekly podcast DokToks on LinkedIn, X, or Facebook.  
Links are provided on this site. <https://linktr.ee/DocToks>